



**CLMTEXFINITY®**

The textiles' favorite



**stowelia®**

Folding machine

[www.clmtexfinity.com](http://www.clmtexfinity.com)



## Support, the next level

**We keep your textiles moving**

### Introducing the CLMTextfinity Service

In 2010, CLMTextfinity made a promise: to personally ensure the safety, reliability and functionality of every machine – without compromise. And they signed their name to it.

This vow is more than ever alive today through our dedicated and passionate people. And we're building upon their personal commitment with investments in new technology.

Our name is CLMTextfinity – and count on our next level service

### **A more personalized experience**

We put you and your customers at the center of everything we do



#### **Personalized contracts**

Flexible service packages offer maintenance and connectivity options to suit your needs.



#### **Custom notifications**

Easily customise your communication preferences to access real-time notifications and simplified, faster reporting.



#### **Event alerts**

Event-driven alerts keep you in the loop on important updates about your equipment.



#### **Academy**

Tailor made education for your technicians help you avoid downtimes, increase product lifespans and plan for the future.

# Support the next level

We are committed to being easy to do business with. That means giving you a single place to find all the information you need when you need it. Contact our teams directly via phone, chat or email, and track maintenance and equipment health in real-time.

# S.towel<sup>a</sup>

## Folding machine



### Speed

#### High Speed of Folding and Stacking

Thanks to advanced engineering and the use of intelligent technology, the S.towel-a is a top performing machine, tuned for high production laundries.

- Up to 1.800 items/hr
- Folding On the Fly
- Intelligent Stacking Options
- Automatic Buffering on Conveyor
- Simultaneous unloading



### Quality

#### Advanced Technology and Folding Perfection

Our continuous efforts in maximising the reliability of the S.towel-a has led to a robust design with top quality parts. This results in the excellent folding and stacking and extends the lifetime of the towel folder.

- Long feeding conveyor for better grip and height adjustable for ergonomic feeding position
- Each motor controlled via individual frequency inverter
- Top brand parts: pneumatics, electronics, rolls, belts, motors and drivers
- Robust construction
- Intelligent design leading to precise and tight folds



### Flex

#### The Art of Flexibility

Continuously listening and learning from our customers made the S.towel-a a highly flexible folding machine, adaptable to specific needs, easy to customise and integrate into existing installations.

- Return of folded items left or right, front or back
- 2 versions: Long / Short (resp. 2400 / 1900mm maximum length of pieces)
- Multiple folding Patterns
- Adjustable stacker height
- Amount of stackers between 1 and 4 fabric

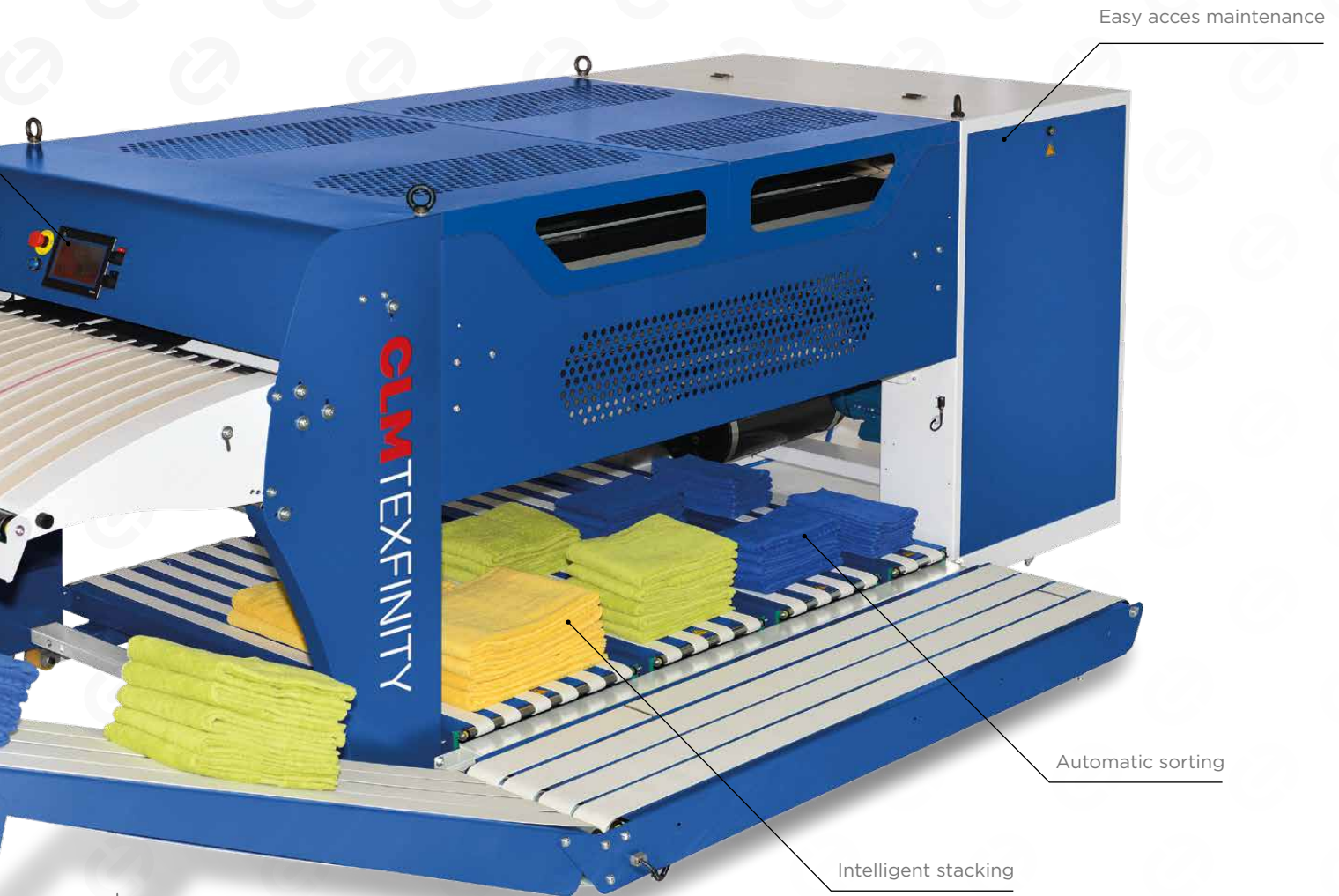




## Internet of Things

Taking full advantage of the interconnectivity, the S.towel-a folders became cyber-physical solutions, continuously streaming data, leading to more automation, machine learning and real-time information.

- Selection of the recipe via client, or RFID Reader or barcode reader
- Integrated with overhead bag system controls
- Storage of production data
- Connection with Central Database
- Integration with Smart Conveyors already prepared in the machine
- Operation/service/productivity via smartphone or tablet



## Keep it Simple & Straightforward

Keeping it simple, the design of the S.towel-a and its user interface makes it easy to understand, easy to use and easy to maintain. Using standard parts, widely available surely helps.

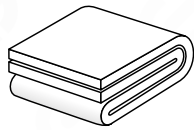


- Minimum moving parts
- 100 recipes
- 7-inch colour responsive touch screen of high resolution and straightforward menu structure makes generating and changing programs effortless
- Easy maintenance
- Standard parts widely available

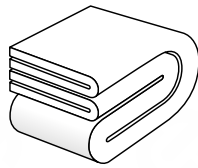


## Folding Patterns

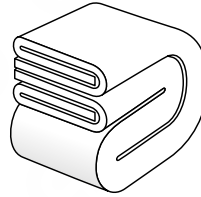
As the S.towel-a is able to make up to 4 folds, many different folding patterns are possible. For each type, a separate folding pattern can be programmed, making the machine extremely flexible.



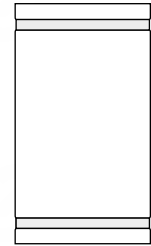
**PF: Bypass**  
CF: Quarter fold



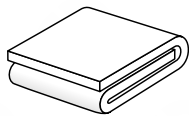
**PF: Half fold**  
CF: Quarter fold



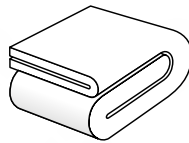
**PF: French fold**  
CF: Quarter fold



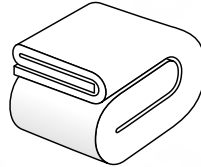
towels  
airplane blankets



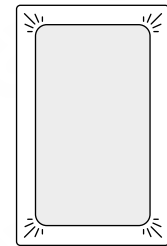
**PF: Bypass**  
CF: Third fold



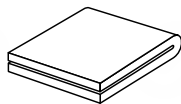
**PF: Half fold**  
CF: Third fold



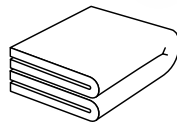
**PF: French fold**  
CF: Third fold



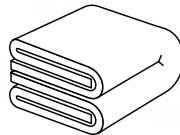
fitted sheets  
bed pads



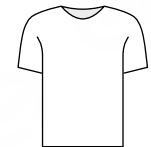
**PF: Bypass**  
CF: Half fold



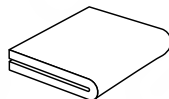
**PF: Half fold**  
CF: Half fold



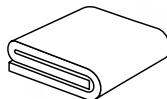
**PF: French fold**  
CF: Half fold



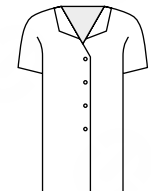
t-shirts  
short/long sleeve



**PF: Half fold**  
CF: Bypass



**PF: French fold**  
PF: Bypass



uniforms  
hospital garments



## Smart

### Fold Smart !

Making the S.towel-a more and more intelligent lowers the need for complex adjustments and corrects human errors. Smart machines interconnect, optimise the use of resources and generate the information you need, when you need it.

- Folding Pattern based on length and/or width
- Automatic sorting, based on length or on position on feeding table, making the automatic sorting of same-sized items possible
- Automatic feeding table start or via button
- 25 pre-defined recipes that can be used or copied
- Discover S.pulse: efficiency/productivity numbers shown on a large display
- Lowest possible downtime
- Interactive error indication
- Fault history and statistics



underwear  
night gowns  
and more...



## Nature-Friendly

A well-thought design lowers the need of energy and air, leading to savings for our customers and reduces the ecological footprint.

## Technical Specs

Max. piece dimensions	S.towel-a Air L: 2400 x 1200 mm S.towel-a Air S: 1900 x 1200 mm
Air pressure	6 bar
Air consumption	8 - 20m <sup>3</sup> /hr
Air connection	≥ Ø 16 mm
Power supply	3 x 400V, 50/60Hz or 3 x 230V 50/60Hz or 1 x 230V 50/60Hz
Power consumption	0 - 2kWh
Width	1396 / 1919 mm (excl. / incl. final delivery belt)
Length	S.omni-a S: 3761 / 4852 mm S.omni-a L: 4198 / 5327 mm (excl. / incl. final delivery belt)
Height	1430 mm
Weight	1100 kg

**CLMTextfinity** designs, develops, manufactures, implements and services a full range of industrial laundry solutions.

Our customers range from industrial laundries and textile rental suppliers as well as hospital and hotel on-premise laundries.

The equipment is constructed in our 3 production factories in China, covering around 133.000 square meters of working space.

Customers highly value our strict standards in production, people and quality management according to ISO9001 norms and we are experienced in both Western and Asian industry cultures, standards and languages.

## Our range of products consists of:

### Category

#### ● Wash & Dry

### Name

- S.wash-t** Tunnel washer
- S.press** Water extraction press
- S.dry-p** Passthrough dryer
- S.wash-e** Washer-extractor
- S.dry-f** Front loading dryer

#### ● Sort & Handle

- S.bag** Bag system
- S.belt** Conveyors washroom
- S.load** Loading conveyors
- S.trans** Conveyors finishing
- S.control** Control systems
- X.pack** Packing machine

### Category

#### ● Full Dry Finish

### Name

- S.towel-a** Air towel folder
- S.omni-a** Air multi folder

#### ● Flatwork Finish

- S.grab** Picker
- S.feed-s** Automatic feeder
- S.feed-m** Manual feeder
- S.feed-r** Remote feeder
- S.iron-c** Chest ironer
- S.fold-l** Folder large pcs
- S.fold-s** Folder small pieces
- S.fold-m** Folder multi lane



**CLMTextfinity Europe**  
Hoge Mauw 118  
2370 Arendonk  
Belgium  
[www.clmtexfinity.com](http://www.clmtexfinity.com)  
Email: [info@clmtexfinity.com](mailto:info@clmtexfinity.com)

**CLMTextfinity Asia**  
No.18 Xiangyun Road, Dianshanhu  
Kunshan City  
China  
[www.clmtexfinity.com](http://www.clmtexfinity.com)  
Email: [info@clmtexfinity.com](mailto:info@clmtexfinity.com)